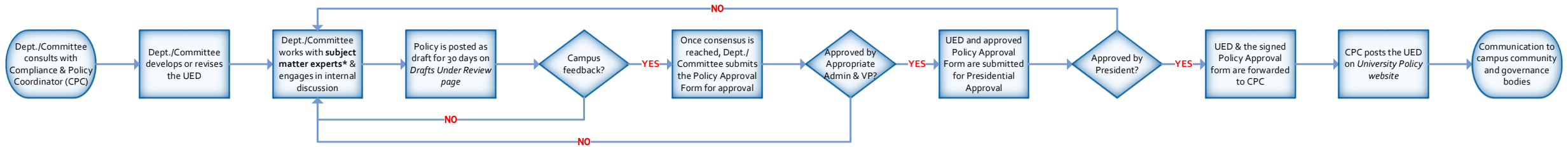
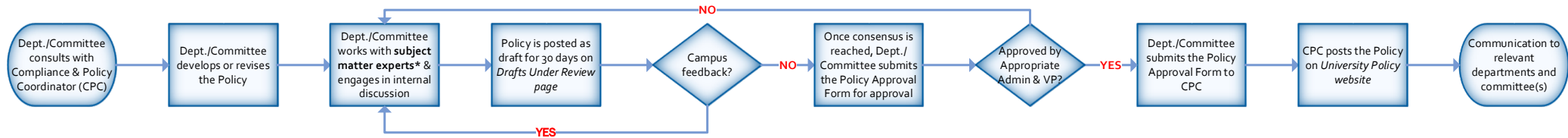


## University Executive Directive Approval Process<sup>1</sup>



## Policy Approval Process<sup>2</sup>



1: **University Executive Directives (UEDs)** are guiding principles for the campus that promote consistency and operational efficiency, enhance our mission, and mitigate significant organizational risk. The approval process for UEDs is much more rigorous involving campus consultation and Vice Presidential approval prior to submission to the President. UEDs have the highest authority level of any campus policy and are effective immediately after the campus consultative process and upon the signature of the President.

2: **Policies** are guiding principles at the departmental level that are the means for managing the business of campus community in a consistent and orderly manner. Policies are tied to a campus-specific business process where a CSU policy does not provide sufficient guidance. The department manager is involved in the Policy approval process and at least 30 days are required for campus community feedback before finalization of the Policy.