



# Enrollment, Retention, and Graduation

*Presented by Sutee Sujitparapitaya  
November 14, 2016*

*Academic Institutional Research (AIR)*

 *Email: [Sutee@sfsu.edu](mailto:Sutee@sfsu.edu)*



# Presentation Outlines:

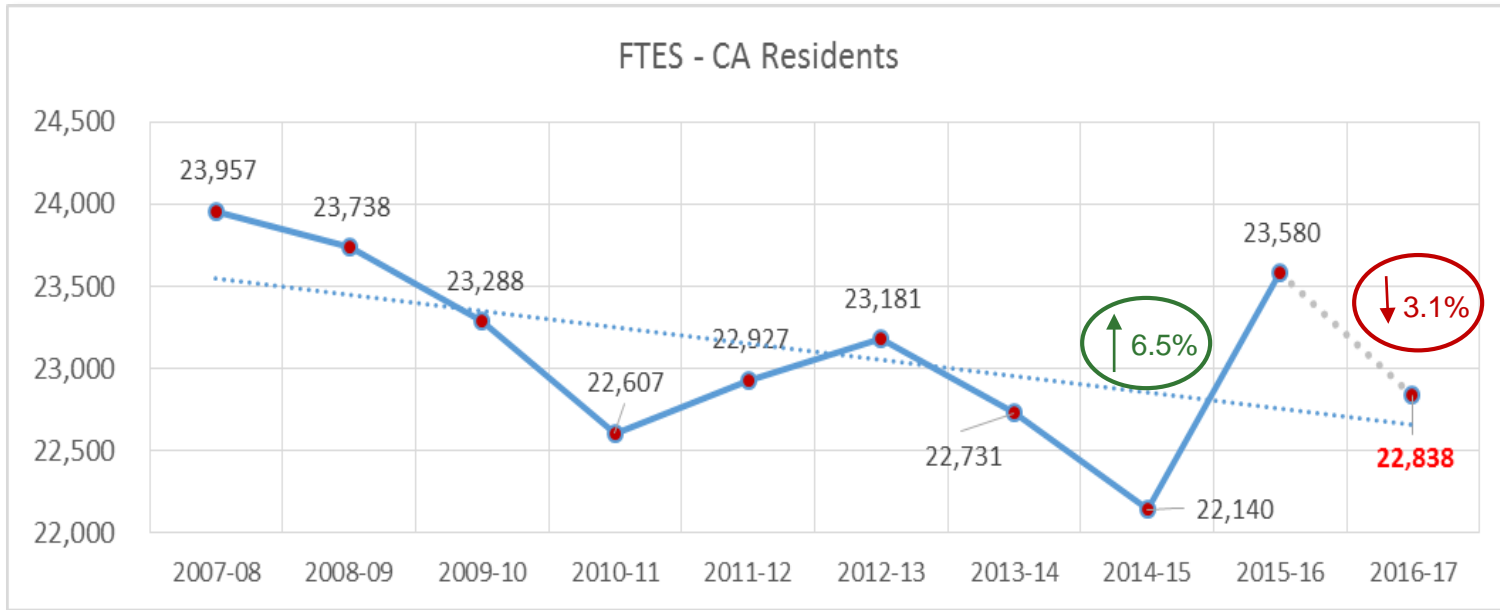
2

- Enrollment Trend and *CY 2016-17 Projection*
- Looking Forward: *CY 2017-18 Projection*
- Changes in New Students (First-time Freshmen and New Transfers, and New Graduates)
- Future Outlook of *Feeder Institutions*:
  - High School Graduation Projection for Feeder Counties
  - California Community College (CCC) Enrollment Projection by CA Regions
- One Year Stopped-Out by College and Program (*Fall 2015 → Fall 2016*)
- *Retention and Graduation Rates for First-time Freshman Cohort*

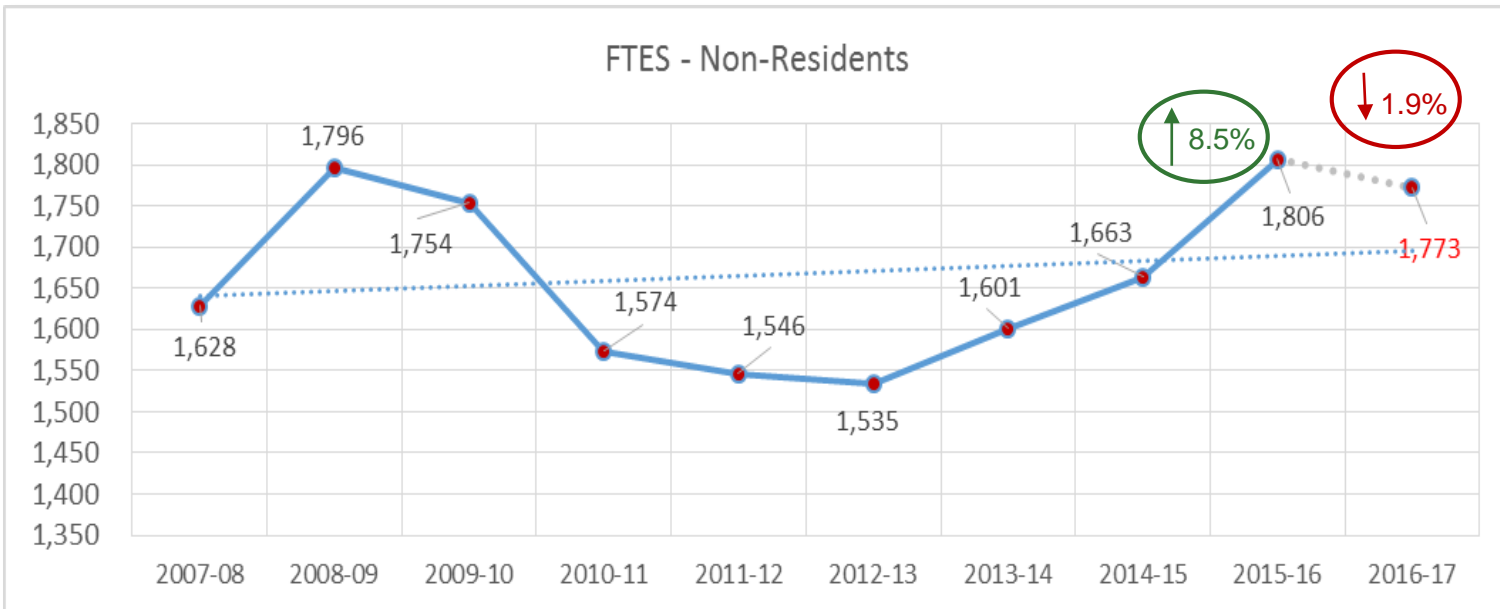
# Enrollment Trends and CY 2016-17 Projection

Assumptions: Spring 2017 New Students = (Spring 2016 New Students) \* (% Changes for New Students between Fall 2015 and Fall 2016)

3



5.2% below  
CO Target  
(24,099 FTES)



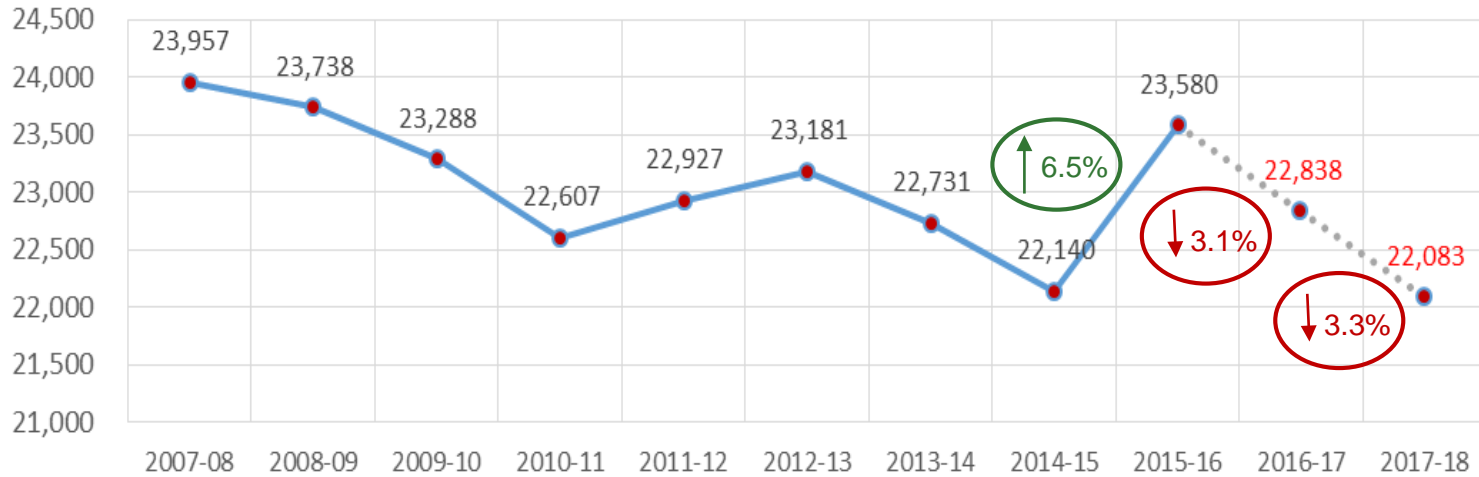
# Looking Forward: CY 2017-18 Projection

## Assumptions:

- New Students for 2017-18 = New Students for 2016-17
- Summer 2017 = Summer 2016

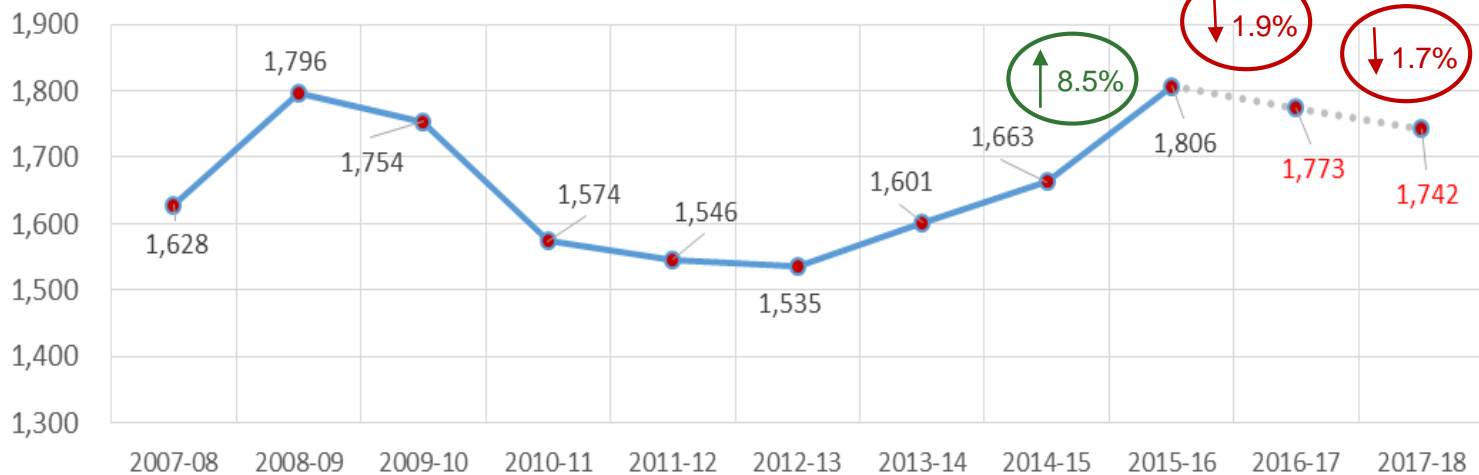
4

### FTES - CA Residents



8.4% below  
CO Target  
(24,099 FTES)

### FTES - Non-Residents



# Will require 36% additional new students to meet the 2017-18 CO target

**(A) Assumptions:**

- New Students for 2017-18 = New Students for 2016-17
- Summer 2017 = Summer 2016

**(B) Assumptions:**

- New Students for 2017-18 = 136% of New Students for 2016-17
- Summer 2017 = Summer 2016

36% Growth for Fall 2017 and Spring 2018

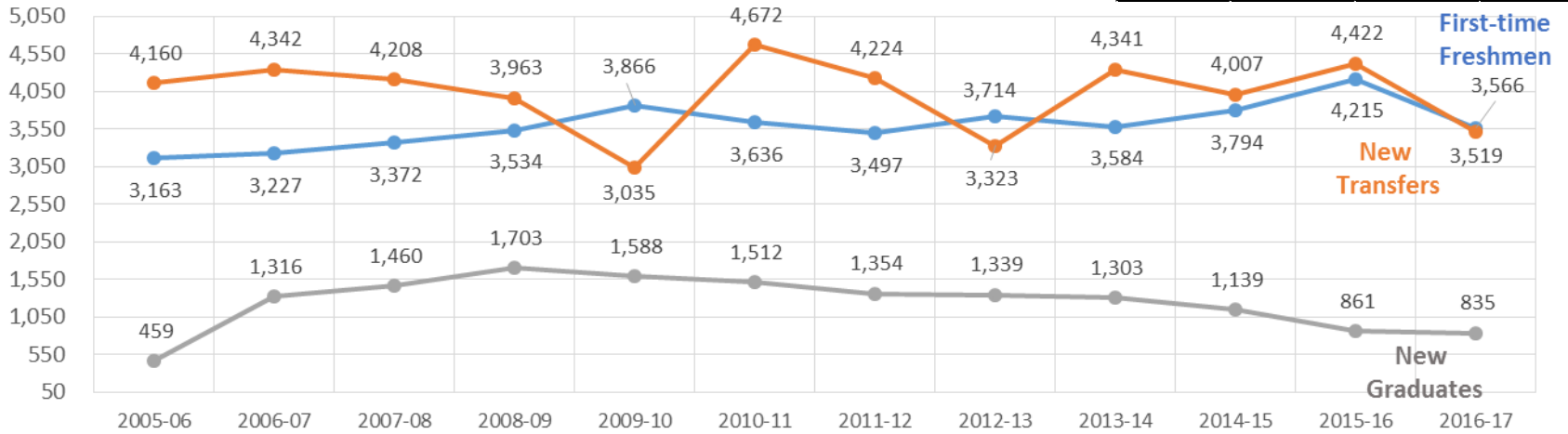
		Projection							CY 2017-18
		Summer 2017		Fall 2017		Spring 2018			
		HC	FTES	HC	FTES	HC	FTES		
CA Residents	New	1st Time Freshmen	1	0	3,491	3,095	75	66	1,581
		New UG Transfers	-	-	2,722	2,234	797	624	1,429
		New Pbac	45	-	187	180	60	50	115
		1st Time Graduates	-	8	710	489	125	62	279
		<b>Total</b>	<b>46</b>	<b>8</b>	<b>7,110</b>	<b>5,998</b>	<b>1,057</b>	<b>803</b>	<b>3,404</b>
	Continuing	Undergraduates	5,345	2,118	17,409	14,392	21,061	17,933	17,221
		2BA/Pbac	24	6	186	120	271	223	175
		Graduates	402	180	1,459	1,015	1,872	1,372	1,283
		<b>Total</b>	<b>5,771</b>	<b>2,304</b>	<b>19,053</b>	<b>15,527</b>	<b>23,203</b>	<b>19,527</b>	<b>18,679</b>
	Total	Undergraduates	5,346	2,118	23,622	19,721	21,933	18,623	20,231
2BA/PBac		69	6	373	300	331	274	290	
Graduates		402	187	2,169	1,504	1,997	1,433	1,562	
<b>Total</b>		<b>5,817</b>	<b>2,311</b>	<b>26,163</b>	<b>21,525</b>	<b>24,260</b>	<b>20,330</b>	<b>22,083</b>	
							<b>Co Target</b>	<b>24,099</b>	<b>91.6%</b>

		Projection							CY 2017-18
		Summer 2017		Fall 2017		Spring 2018			
		HC	FTES	HC	FTES	HC	FTES		
CA Residents	New	1st Time Freshmen	1	0	4,737	4,200	102	90	2,145
		New UG Transfers	-	-	3,694	3,031	1,082	847	1,939
		New Pbac	45	-	254	244	81	68	156
		1st Time Graduates	-	8	963	664	170	84	378
		<b>Total</b>	<b>46</b>	<b>8</b>	<b>9,648</b>	<b>8,140</b>	<b>1,434</b>	<b>1,089</b>	<b>4,618</b>
	Continuing	Undergraduates	5,345	2,118	17,409	14,392	22,705	19,334	17,922
		2BA/Pbac	24	6	186	120	315	262	194
		Graduates	402	180	1,459	1,015	2,087	1,530	1,362
		<b>Total</b>	<b>5,771</b>	<b>2,304</b>	<b>19,053</b>	<b>15,527</b>	<b>25,107</b>	<b>21,127</b>	<b>19,479</b>
	Total	Undergraduates	5,346	2,118	25,840	21,623	23,889	20,272	22,007
2BA/PBac		69	6	439	364	397	331	350	
Graduates		402	187	2,422	1,679	2,256	1,614	1,740	
<b>Total</b>		<b>5,817</b>	<b>2,311</b>	<b>28,701</b>	<b>23,666</b>	<b>26,542</b>	<b>22,216</b>	<b>24,097</b>	
							<b>Co Target</b>	<b>24,099</b>	<b>100.0%</b>

# Changes of New Students

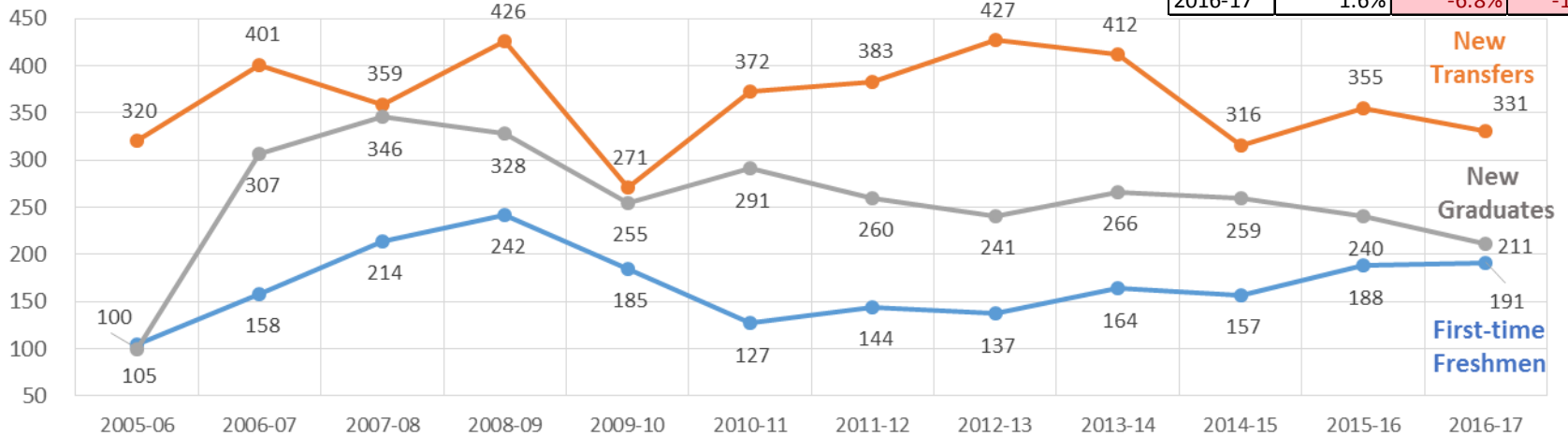
	% Changes, CA Resident		
	First-time Freshmen	New Transfers	New Graduates
2014-15	5.9%	-7.7%	-12.6%
2015-16	11.1%	10.4%	-24.4%
2016-17	-15.4%	-20.4%	-3.0%

Headcount - CA Residents



	% Changes, Non-Resident		
	First-time Freshmen	New Transfers	New Graduates
2014-15	-4.3%	-23.3%	-2.6%
2015-16	19.7%	12.3%	-7.3%
2016-17	1.6%	-6.8%	-12.1%

Headcount - Non-Residents



# Changes of First-time Freshmen: Fall 2015 → Fall 2016

7

## SFSU Enrollment By Feeder Counties

CA Region	Fall 2015	Fall 2016	Diff	FTES
Local Service	1,920	1,868	(52)	(46)
Northern CA	129	86	(43)	(38)
Central CA	519	421	(98)	(87)
<b>Southern CA</b>	<b>1,558</b>	<b>1,083</b>	<b>(475)</b>	<b>(421)</b>
<b>Total</b>	<b>4,126</b>	<b>3,458</b>	<b>(668)</b>	<b>(592)</b>

	Fall 2015	Fall 2016	Diff	FTES
Top 10 Counties:	3,418	2,907	(511)	(439)
County	Fall 2015	Fall 2016	Diff	FTES
Los Angeles	751	511	-240	-213
San Francisco	584	608	24	21
Alameda	496	462	-34	-30
Santa Clara	305	267	-38	-34
San Diego	292	201	-91	-81
San Mateo	264	265	1	1
Contra Costa	240	222	-18	-16
Orange	209	156	-53	-47
Riverside	171	123	-48	-43
Sacramento	106	92	-14	-12

## Projected High School Graduation by Feeder Counties

	Actual 2013-14	Actual 2014-15	Proj 2015-16	Proj 2016-17	Proj 2017-18	Proj 2018-19	Proj 2019-20	Proj 2020-21
Los Angeles ↓	105,732	104,616	1.3%	-2.8%	0.0%	-2.0%	-1.9%	0.2%
San Francisco ↑	3,839	4,238	13.2%	-12.8%	5.7%	-2.4%	-0.1%	0.6%
Alameda ↑	14,658	14,952	-2.9%	-0.7%	4.8%	-1.0%	1.4%	3.9%
Santa Clara ↑	17,583	17,941	-1.8%	-0.3%	4.4%	-1.3%	1.6%	2.9%
San Diego 🌟	34,239	35,000	-0.2%	-1.0%	-1.0%	1.6%	-0.6%	2.3%
San Mateo →	6,068	5,932	0.3%	1.9%	4.6%	-4.4%	3.1%	4.2%
Contra Costa ↑	11,776	12,366	-4.2%	3.0%	2.5%	0.8%	1.9%	1.5%
Orange ↓	37,499	37,965	-3.3%	1.9%	-1.0%	-2.1%	-1.3%	2.2%
Riverside ↓	29,290	30,039	-1.9%	-0.9%	2.0%	-1.1%	-1.0%	1.7%
Sacramento ↑	15,774	15,946	-2.0%	-0.2%	1.4%	-0.3%	2.3%	1.6%
↓ Top 10 Counties	276,458	278,995	-0.5%	-1.1%	0.9%	-1.2%	-0.6%	1.5%

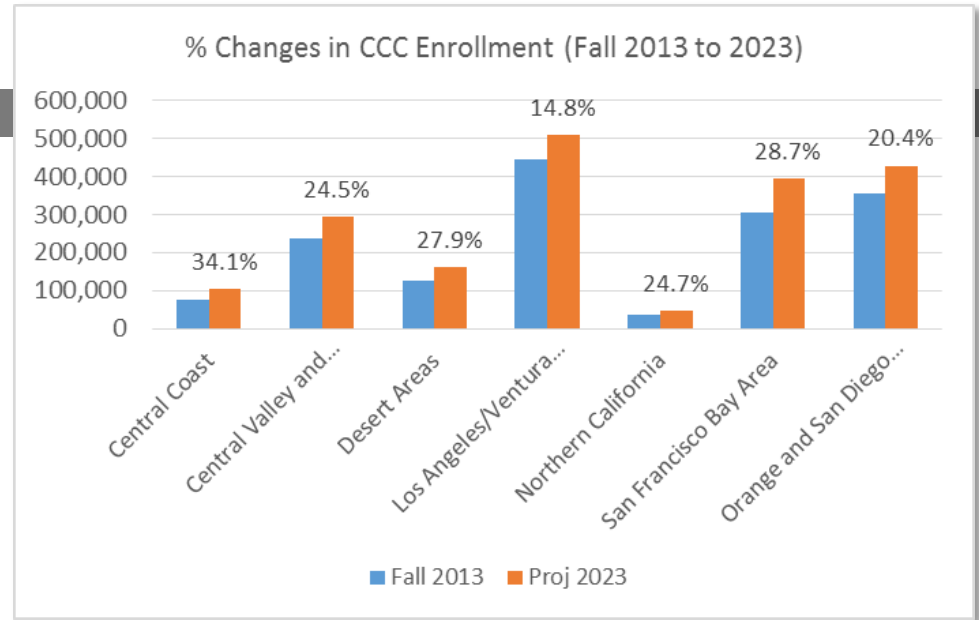
# Changes of New Transfers: Fall 2015 → Fall 2016

8

CA Region	Fall 2015	Fall 2016	Diff	FTES
Local Service	2,064	1,726	(338)	(284)
Northern CA	184	135	(49)	(41)
Central CA	483	334	(149)	(125)
Southern CA	709	508	(201)	(169)
Total	3,440	2,703	(737)	(619)

	Fall 2015	Fall 2016	Diff	FTES
Top 10 Counties:	2,812	2,239	(573)	(492)

County	Fall 2015	Fall 2016	Diff	FTES
San Francisco	646	463	-183	-154
San Mateo	405	366	-39	-33
Santa Clara	345	291	-54	-45
Contra Costa	315	278	-37	-31
Alameda	307	293	-14	-12
Los Angeles	293	183	-110	-92
San Diego	186	135	-51	-43
Orange	140	109	-31	-26
Santa Barbara	92	61	-31	-26
Sacramento	83	60	-23	-19



## CCC Enrollment Projection by CA Regions

	Actual Fall 2013	Projected 2023	
	Enrollment	Enrollment	% Change
Central Coast	76,782	102,956	34.1%
Central Valley and Sierra Foothills	235,334	293,077	24.5%
Desert Areas	126,492	161,785	27.9%
Los Angeles/Ventura Counties	444,401	510,313	14.8%
Northern California	36,534	45,574	24.7%
San Francisco Bay Area	306,686	394,558	28.7%
Orange and San Diego Counties	356,212	428,724	20.4%
Total	1,582,441	1,936,987	22.4%

Source: CCC Long Range Master Plan



# One Year Stopped-Out by College (Fall 2015 → Fall 2016)

College	1st Freshmen			New Transfers			New Pbac			New Graduates		
	F15	S-OT	S-OT%	F15	S-OT	S-OT%	F15	S-OT	S-OT%	F15	S-OT	S-OT%
Business	685	139	20%	1036	186	18%				72	8	11%
Education	24	5	21%	77	6	8%	162	108	67%	154	20	13%
Ethnic Studies	18	3	17%	29	2	7%				24	0	0%
Health and Social Sci	867	184	21%	568	62	11%	26	0	0%	194	15	8%
Interdisciplinary Studies	617	116	19%	1	1	100%	32	31	97%			
Liberal and Creative Arts	981	214	22%	1224	156	13%	4	2	50%	258	36	14%
Science and Engineering	1084	243	22%	726	121	17%	3	1	33%	224	12	5%
<b>Total</b>	<b>4,276</b>	<b>904</b>	<b>21%</b>	<b>3,661</b>	<b>534</b>	<b>15%</b>	<b>227</b>	<b>142</b>	<b>63%</b>	<b>926</b>	<b>91</b>	<b>10%</b>

College	Cont. Freshmen			Cont. Sophomores			Cont. Juniors			Cont. Seniors		
	F15	S-OT	S-OT%	F15	S-OT	S-OT%	F15	S-OT	S-OT%	F15	S-OT	S-OT%
Business	324	59	18%	500	51	10%	1195	140	12%	2416	193	8%
Education	9	2	22%	20	2	10%	68	4	6%	73	4	5%
Ethnic Studies	7	3	43%	8	1	13%	40	7	18%	85	16	19%
Health and Social Sci	360	63	18%	656	104	16%	815	90	11%	1567	135	9%
Interdisciplinary Studies	337	97	29%	387	57	15%	132	19	14%	29	7	24%
Liberal and Creative Arts	425	91	21%	721	77	11%	1511	177	12%	2291	271	12%
Science and Engineering	462	92	20%	761	99	13%	934	109	12%	2043	194	9%
<b>Total</b>	<b>1,924</b>	<b>407</b>	<b>21%</b>	<b>3,053</b>	<b>391</b>	<b>13%</b>	<b>4,695</b>	<b>546</b>	<b>12%</b>	<b>8,504</b>	<b>820</b>	<b>10%</b>

College	Cont. PBac			Cont. Graduates			Total		
	F15	S-OT	S-OT%	F15	S-OT	S-OT%	F15	S-OT	S-OT%
Business	1	0	0%	193	9	5%	6,422	785	12%
Education	64	51	80%	462	112	24%	1,113	314	28%
Ethnic Studies				17	11	65%	228	43	19%
Health and Social Sci	43	1	2%	584	31	5%	5,680	685	12%
Interdisciplinary Studies	1	0	0%				1,536	328	21%
Liberal and Creative Arts	3	2	67%	520	126	24%	7,938	1,152	15%
Science and Engineering	11	11	100%	380	138	36%	6,628	1,020	15%
<b>Total</b>	<b>123</b>	<b>65</b>	<b>53%</b>	<b>2,156</b>	<b>427</b>	<b>20%</b>	<b>29,545</b>	<b>4,327</b>	<b>15%</b>

**S-OT = Stopped Out**

- Student who enrolled in the fall 2015, but (did not return in the fall 2016) and (had not graduated at the end of the fall 2015, spring 2016, and summer 2016)

*Excluded: J-1 and non-degree seeking students.*

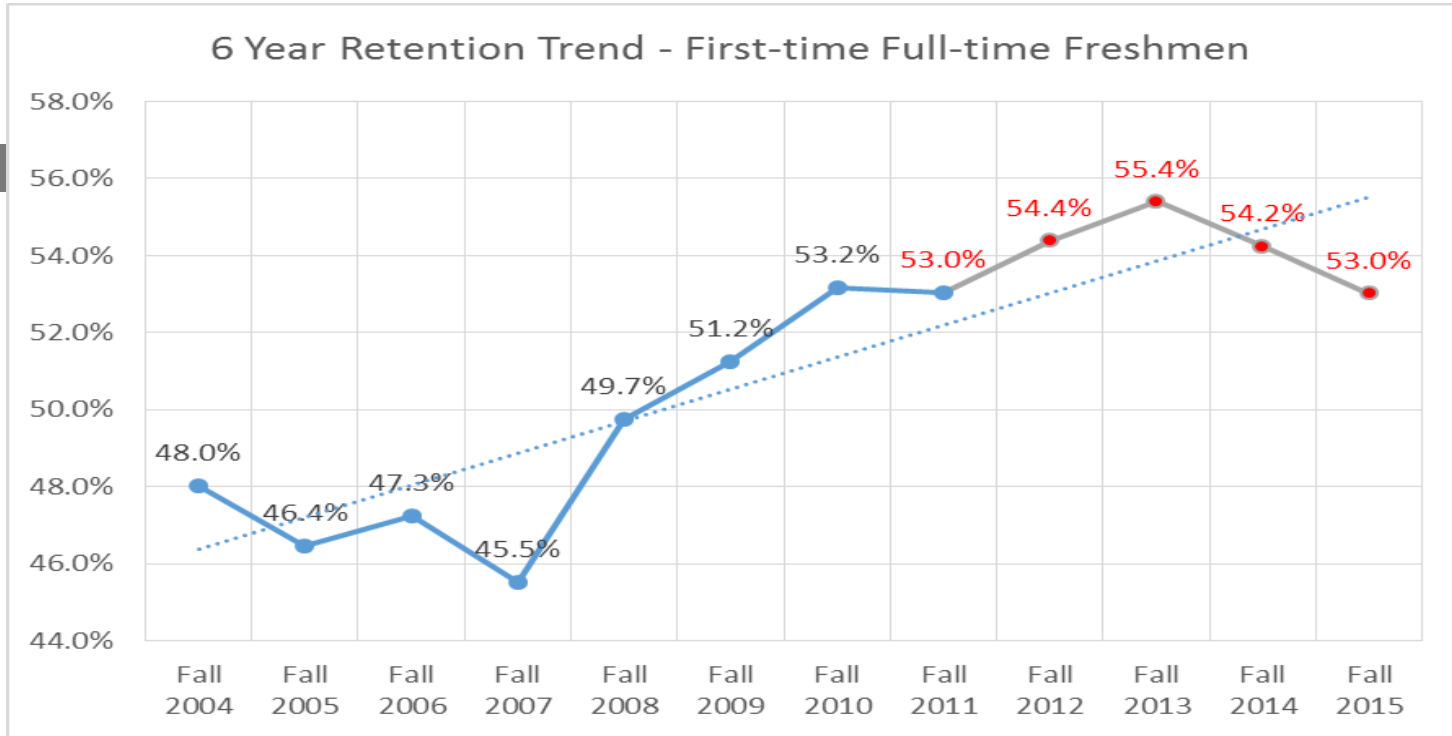
## One Year Stopped-Out by Program – Top 25 (Fall 2015 → Fall 2016)

10

Program	1st Freshmen		
	F15	S-OT	S-OT%
Undeclared	617	116	19%
Pre-Nursing	433	84	19%
Pre-Biology	218	50	23%
Pre-Psychology	177	45	25%
Bus Admin-Management	152	36	24%
Computer Sci	190	33	17%
Bus Admin-Marketing	156	32	21%
Mechanical Engineering	106	30	28%
Pre-Criminal Justice	100	30	30%
Cinema	140	25	18%
Pre-Kinesiology	121	25	21%
Bus Admin-General Bus	116	25	22%
Computer Engineering	103	20	19%
Art-Studio Art	52	20	38%
Political Science	89	19	21%
Bus Admin-Finance	71	16	23%
Bus Admin-Intl Business	74	13	18%
English-Creative Writing	69	13	19%
Civil Engineering	59	13	22%
Journalism-Print/Online	56	12	21%

Program	New Transfers		
	F15	S-OT	S-OT%
Bus Admin-Marketing	194	42	22%
Bus Admin-Finance	158	30	19%
Bus Admin-General Bus	144	29	20%
Computer Sci	113	26	23%
Psychology	248	26	10%
Bus Admin-Management	138	22	16%
Liberal Studies	122	21	17%
Communication Studies	192	21	11%
Bus Admin-Accounting	127	18	14%
Criminal Justice Studies	125	16	13%
Bus Admin-Intl Business	74	14	19%
Political Science	81	13	16%
Sociology	70	12	17%
Cinema	116	11	9%
Hospty Mgmt-Tourism Mgmt	62	11	18%
Bus Admin-Info Systems	65	11	17%
Civil Engineering	29	10	34%
Journalism-Print/Online	55	10	18%
Economics	59	9	15%
Mechanical Engineering	51	8	16%

# Retention and Graduation Rates – *First-time Full-time Freshmen*



Entering Semester	Entering	Average SAT Comp	Retention Rates			Graduation Rates		
			1st Yr	2nd Yr	3rd Yr	4th Yr	5th Yr	6th Yr
Fall 2004	2,739	996	80.7%	67.8%	62.3%	14.2%	36.6%	48.0%
Fall 2005	2,999	995	77.4%	64.2%	59.5%	12.0%	33.9%	46.4%
Fall 2006	3,117	988	77.1%	63.8%	58.9%	13.4%	37.4%	47.3%
Fall 2007	3,342	996	74.9%	60.2%	55.4%	12.7%	35.0%	45.5%
Fall 2008	3,512	1,010	74.9%	62.5%	58.8%	14.9%	39.8%	49.7%
Fall 2009	3,855	1,009	76.7%	64.6%	60.3%	18.3%	41.8%	51.2%
Fall 2010	3,609	1,003	81.1%	68.9%	65.1%	18.0%	43.4%	53.2%
Fall 2011	3,469	1,006	80.1%	69.8%	66.1%	17.8%	44.6%	53.0%
Fall 2012	3,756	1,002	82.1%	71.6%	66.4%	21.3%		54.4%
Fall 2013	3,550	991	83.6%	72.3%	66.5%			55.4%
Fall 2014	3,630	992	81.8%	70.7%				54.2%
Fall 2015	4,081	982	80.0%					53.0%
What-if	4,081	-	100.0%					66.3%

		CO Targets
FTF	6-Yr Grad	69%
	4-Yr Grad	33%

Correlation Coefficient (Pearson R):

- \* 1st Year Retention vs. 6 Year Graduation = 0.991
- \* SAT Comp vs. 1st Year Retention = 0.720
- \* SAT Comp vs. 6 Year Graduation = 0.784



## Academic Institutional Research

San Francisco State University  
Administration Building, Room 454D  
1600 Holloway Avenue, San Francisco, CA 94132



Phone: (415) 338-3501



Email: [sutee@sfsu.edu](mailto:sutee@sfsu.edu)